

TORQ STORM[®]

BILLET SUPERCHARGERS



04-06 PONTIAC GTO TUNER KIT
ARP-K-GM-GTO

Installation Instructions

2004-2006 Pontiac GTO

ARP-K-GM-GTO-LS



STEP 1

Disconnect battery.

Unplug MAF sensor and remove factory airbox or CAI.

Remove engine covers and radiator cover.



Installation Instructions

2004-2006 Pontiac GTO

ARP-K-GM-GTO-LS

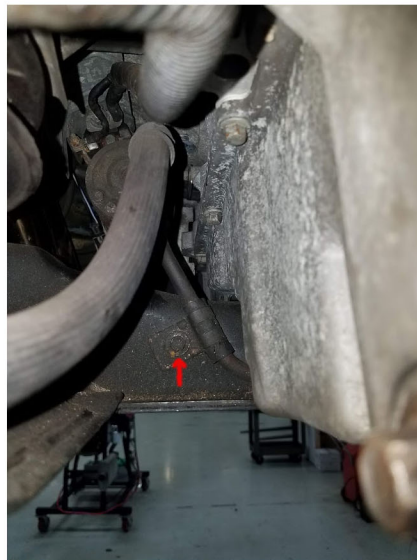


STEP 2

Remove accessory belt.

Unplug fan harness and remove electric fans. This will help gain access to the crank balancer for further steps of the install.

Remove the power steering pump and bracket from the drivers side head. Also remove the factory p.s. feed line. These will no longer be used.



Installation Instructions
2004-2006 Pontiac GTO
ARP-K-GM-GTO-LS



STEP 3

Install bracket ARP-GM10075 onto drivers side head using
(2) M10X1.5X30MM SS SHCS. *Torque to 27 ft lbs*



STEP 4

Install provided power steering line ARP-GM50039 onto rack side for now. Do not tighten yet.



Installation Instructions

2004-2006 Pontiac GTO

ARP-K-GM-GTO-LS



STEP 5

Measure the drill bit through your alignment tool. Make sure it is through .850" from the end of the taper of the drill bit to the inside face of the tool. Wrap a piece of tape around the back side of the tool on the drill bit.



STEP 6

Slide the bit out of the tool. Check your measurement. From the end of the taper to the tape should be 1.650".



Installation Instructions

2004-2006 Pontiac GTO

ARP-K-GM-GTO-LS



STEP 7

Install the pin tool with supplied bolt.
Snug down so tool is locked in position while drilling.

STEP 8

Install drill bit into your drill of choice, a 90 degree air drill works well for fitting into tight areas. Make sure you drill in till the tape hits the surface of the tool. Repeat process for the other hole.

Clean shavings from area.



Installation Instructions

2004-2006 Pontiac GTO

ARP-K-GM-GTO-LS



STEP 9

For ATI Installation

Install the shorter pins in the kit into drilled holes.

Verify the pins are both flush or below the surface of the Bolt/Washer surface of the pulley.

Apply silicone to the keyway of the ATI.

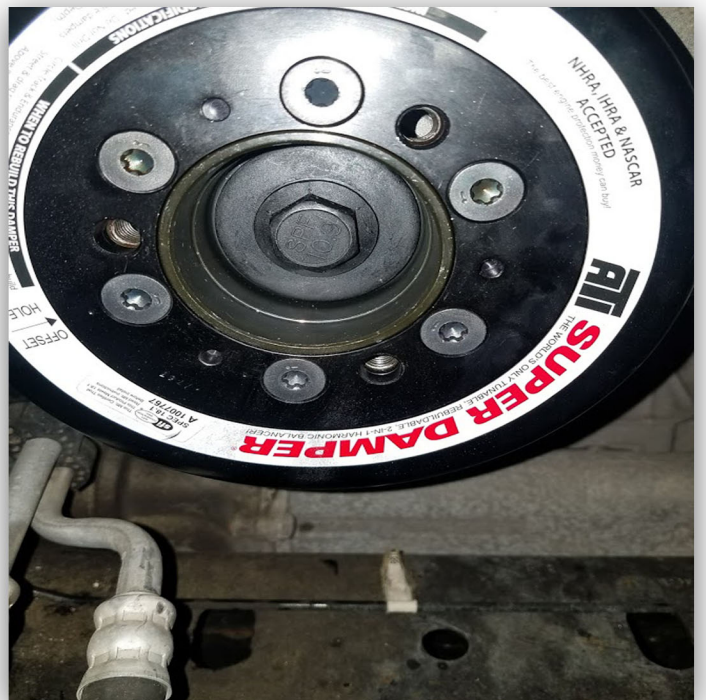


STEP 10

Apply red loctite and install supplied bolt

Tighten to factory torque specs

GM 219 ft. lbs



STEP 11

For stock balancer and hub.

Insert longer pins into holes in hub.

Install the hub into the crank face, lining up the drilled holes.

Be sure the hub is seated flat against the crank face.

STEP 12

Apply red loctite and install supplied bolt

Tighten to factory torque specs

GM 219 ft. lbs

Chrysler 130 ft lbs

STEP 13

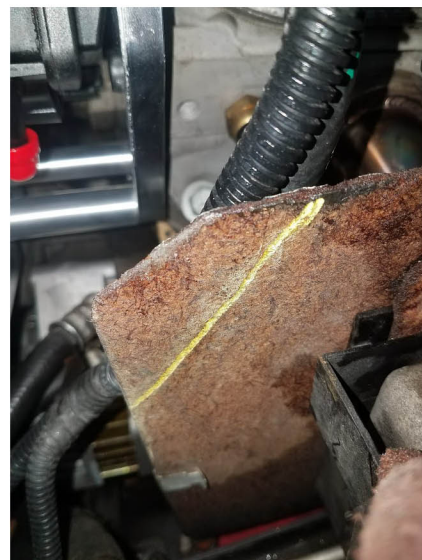
Install supercharger crank pulley as per

supercharger instructions.



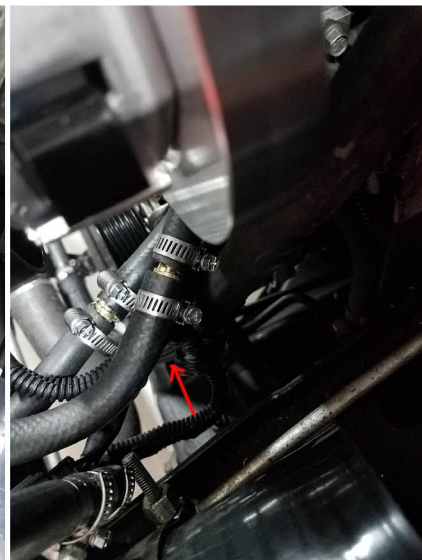
STEP 14

For 04 models. Trim the heat shield to allow clearance for the supercharger.



STEP 15

For automatic transmission cars, cut and extend the transmission cooler lines to give more clearance for the supercharger belt. You will need to carefully bend down the top hard line to get it away from the belt. You will also need to shorten the return line for the power steering reservoir.



Installation Instructions

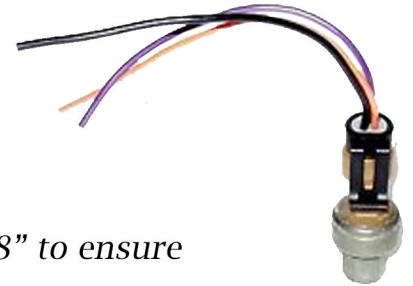
2004-2006 Pontiac GTO

ARP-K-GM-GTO-LS



STEP 16

Locate the a/c pressure switch on the drivers side near the backside of the headlight. This plug needs to be extended approx 8" to ensure that it will not interfere with the supercharger belt.



STEP 17

Next install provided PS pump GM 92229662. Start by connecting the feed line to the bottom of the pump. Leave loose until the pump is affixed to the bracket, and then tighten.



****Refer to the layout sheet in your packet for bolt and spacer location for mounting the supercharger bracket. Set the supercharger in place before mounting the bracket.**

**** FOR 05-06 MODELS****

Trimming and tucking of the upper radiator hose is required to allow clearance for the supercharger belt and pulleys.



STEP 18

Press on the power steering pulley GM-12610794.

Install accessory belt ARP-K060820 per factory routing.

*Re-install the supercharger grooved idler pulley onto the supercharger bracket. **Torque to 27ft lbs***



STEP 19

Mount Supercharger head unit ARP-TORQ-10001 with (7) 3/8 -16 x 1- 1/4 bolts and AN washers.

Torque to 27 ft lbs

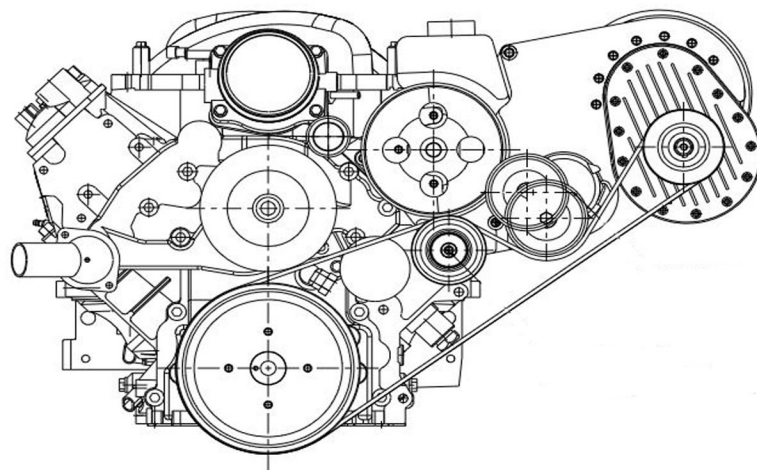
Be sure to have the v-band loosened on the compressor housing so you can rotate the outlet in your desired location. Only tighten till there is about 1/4-1/2" of threads showing and the compressor housing is not able to spin.



STEP 20

Install supercharger belt ARP-K080600.

Use a long wrench and gently turn up clockwise to release tension on the pulley while sliding the belt on.



STEP 21

On 04 models the factory coolant expansion tank is too large to fit any plumbing for a filter. You will need to fit a smaller tank in its place. There are different options.

For our car we chose to go with an Aeroflow tank. This gave us a couple more inches behind the supercharger. And made it look a bit cleaner under the hood getting rid of the dingy factory tank.



Installation Instructions
2004-2006 Pontiac GTO
ARP-K-GM-GTO-LS



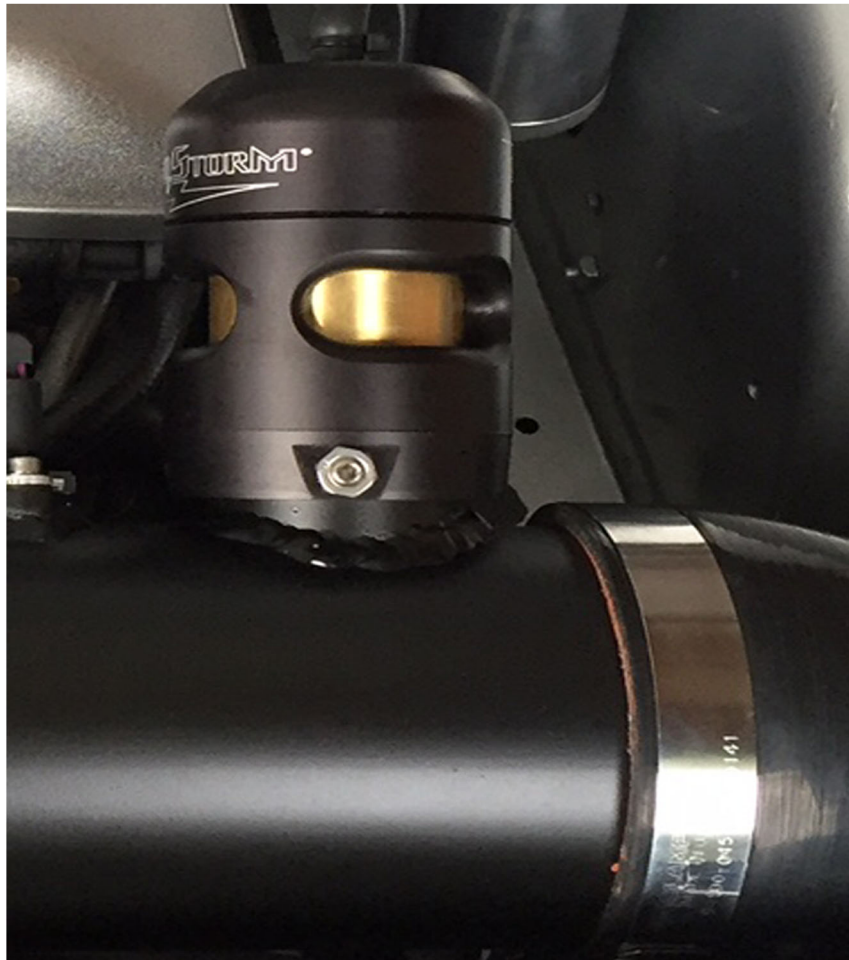
STEP 22

Torque down all bolts. Now that the supercharger is installed. Time to re-install the electric fans, radiator cover, and engine covers. The engine covers will need some trimming around the new pump reservoir/ brackets. You can use 3.5" piping/couplers to route your inlet tubing how you wish.



STEP 23

Install ARP-Bov-Torq-52 BOV between the supercharger and TB. Connect to a vacuum source from of the intake with ARP-27043 7/32 vacuum line.



Additional steps

Replace all spark plugs with one or two heat ranges cooler.

Fuel/ Ignition managment system must be tuned when installing a Torqstorm Supercharger.

Reconnect battery.

Double check all fittings, bolts, clamps. Make sure all wires and lines are properly secured with clamps or wire ties .

Make sure fuel tank is filled with 91 octane or higher fuel.

Start engine and allow to idle a few minutes then shut down.

Recheck to be sure that no hoses, wires, ect are near the exhaust or headers.

Recheck tune before commencing test drive.

After test drive examine all bolts, belts and check for leaks or running issues before finishing with the vehicle.

*Change your oil in the S/C every 10k miles or once a year. Failure to run Torqstorm approved oil will void warranty. **Order direct from Torqstorm Part NO ARP-OIL-GT46***

Fill out warranty card and send it in 30 days from arrival of your S/C to qualify.

Failure to due so may affect your limited lifetime warranty

Additional information for Boost

- We recommend using the following sensors: GM12569241 map sensor and Fast 307004 AIT
- It is suggested to run a wideband o2 sensor to monitor correct air/fuel ratio. 11.6 is ideal for pump gas.
- *PLEASE TAKE SPECIAL NOTE: Operating the vehicle without all the sub assemblies completed and properly installed and working may cause FAILURE OF MAJOR ENGINE COMPONENTS.*
- If you have any questions or concerns contact us at sales@torqstorm.com

Torqstorm superchargers come from the factory filled with 6 oz of ARP-OIL-GT46

Supercharger is ready to run